

Windows Driver Manual

Rev. 1.3

MPT-II/MPT-III

CONTENTS

1.Manual Information.....	1
2.Operating System(OS) Environment.....	1
3.Windows Driver Preparation.....	1
4.Windows Driver Installation.....	2
5.Detailed Windows Driver Setting.....	7
5.1 Printing Preferences.....	7
5.2 Add New Paper Size.....	17
6. Specification.....	20
7. Bluetooth connection.....	21

1.Manual Information

This Windows Driver Installation Manual provides information on installation, detailed specifications, and usage of the printer's Windows Driver according to PC operating system (OS).

We maintain ongoing efforts to enhance and upgrade the functions and quality of all our products. As follow, product specifications and/or user manual content may be changed without prior notice.

2.Operating System(OS) Environment

The following operating systems are supported for usage.

- Microsoft Windows 10 (32 bit/64 bit)

3.Windows Driver Preparation

The Windows Driver is included in the enclosed CD.

The installation file name is HPRTMPTPrinterDriver-V-X.X.X.X.exe

eg : HPRTMPTPrinterDriver-v-1.1.0.0.exe

4.Windows Driver Installation

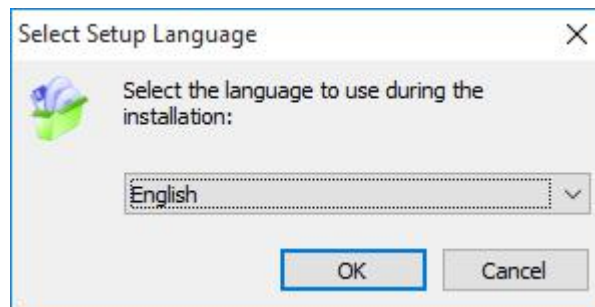


Warning: Under different operating system, the screen has slight difference. Please operate it according to the tips. Take MPT-II (Windows 10) as example.

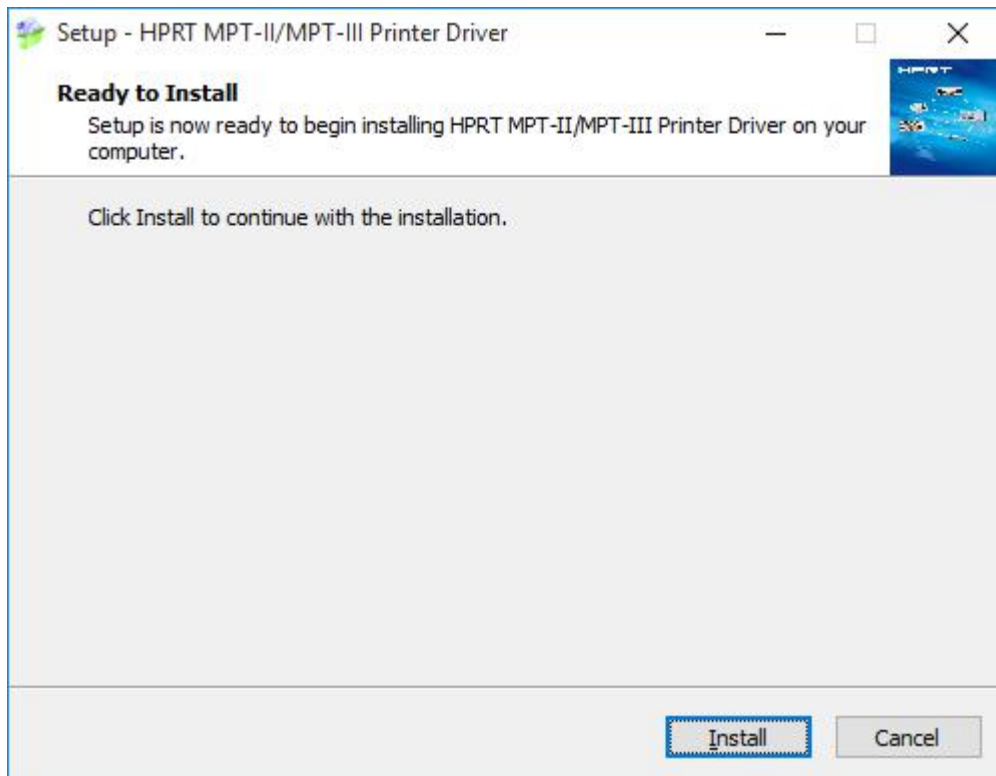
1.Double click Windows Driver.



2.Choose “English” and click “OK”.



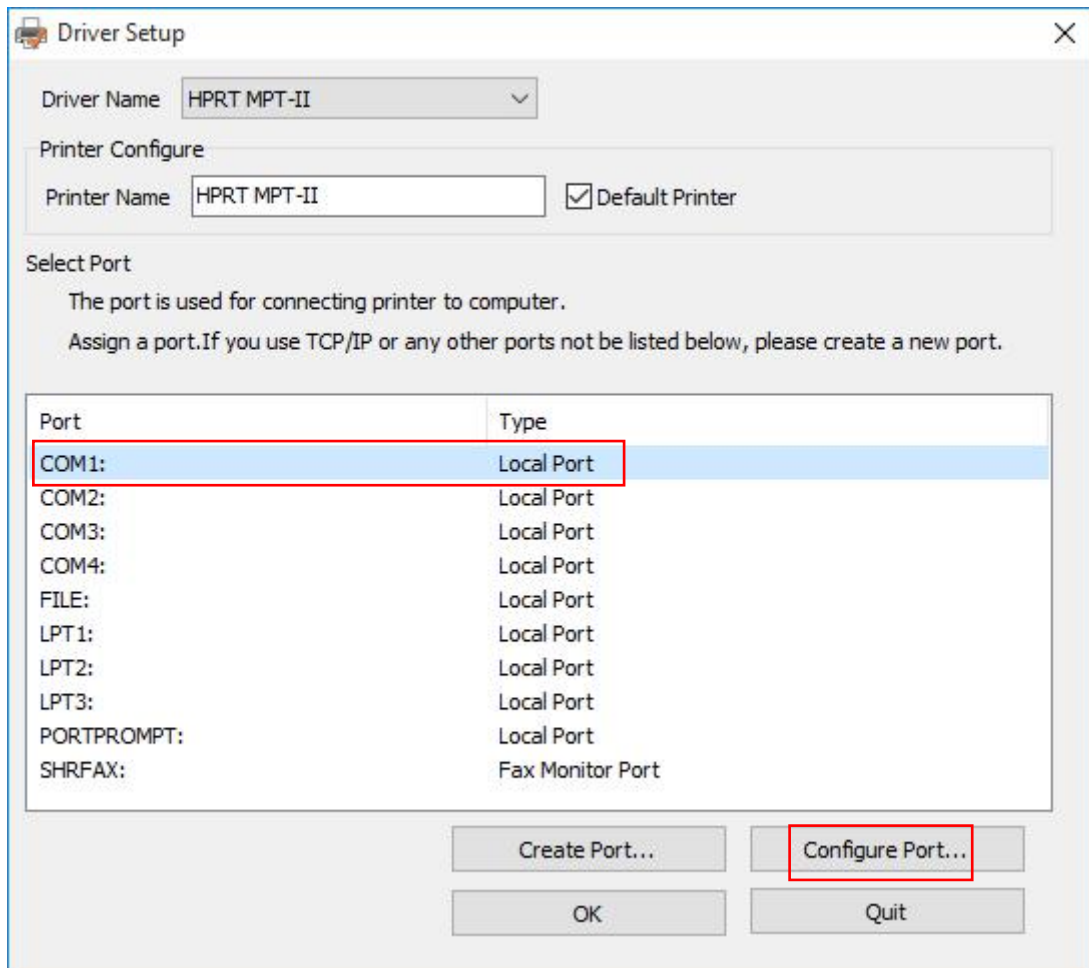
3. Click “Install”.



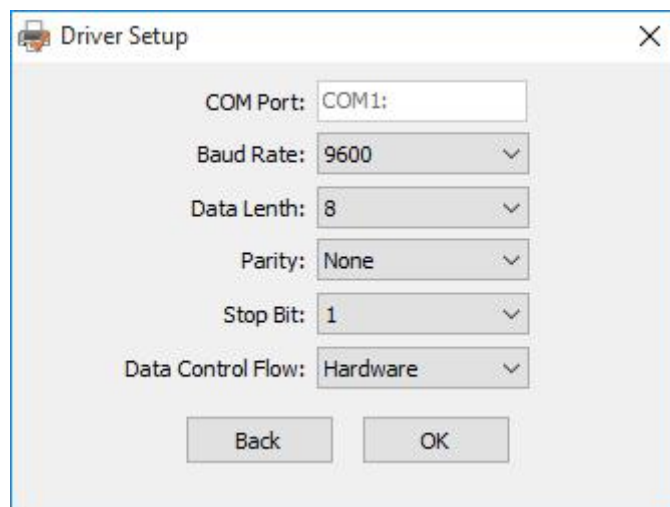
NOTE: If printer is already connected with computer by USB port, it only needs to click “Install”, then it will be installed automatically. Otherwise, proceed to the next step.

4. Choose the matched type and port. (USBxxx is for USB port ,COMx is for serial port, LPTx is for parallel port).

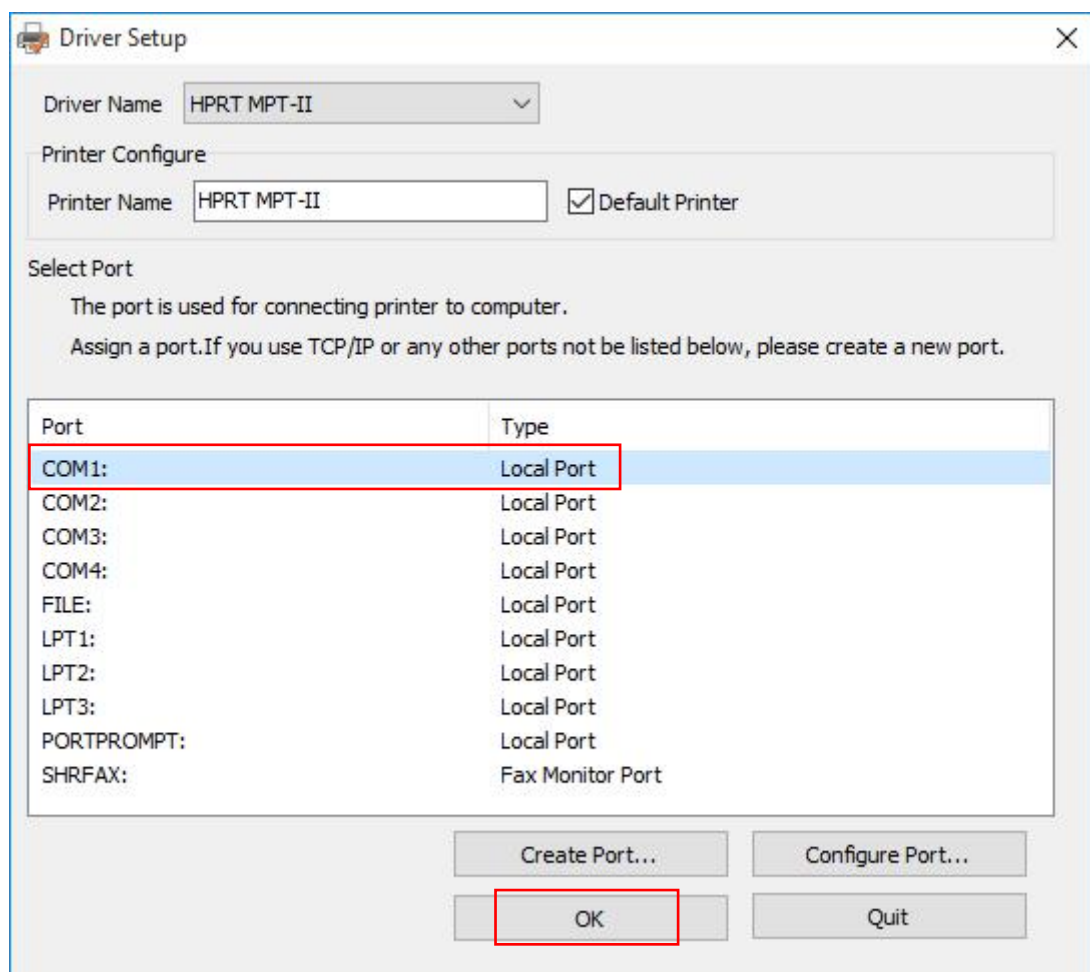
For example, choose "COM1" as port. Click "Configure Port".



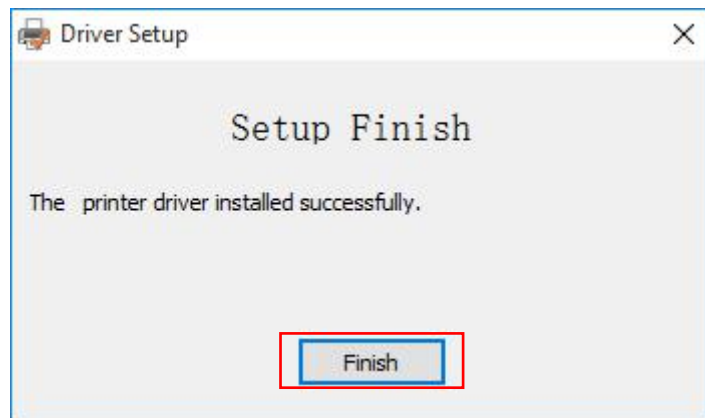
5. Complete the parameter setting.



6. Click "OK".



7. Click "Finish". HPRT MPT-II printer driver installed successfully.



8. After installation, the icon will be found in "Setting" → "Devices" → "Devices and Printers".

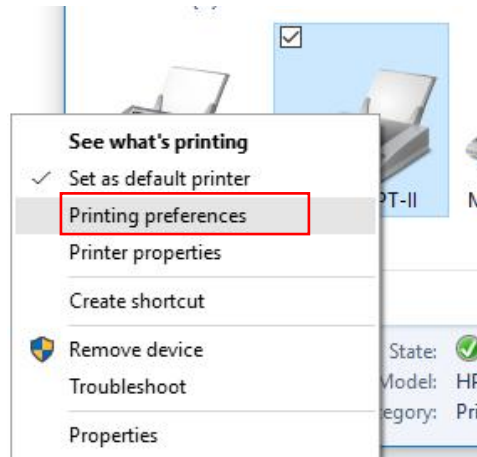


NOTE: If you already installed the driver (No matter what kind of port), when you connect the printer with computer, it will create a USB port automatically.

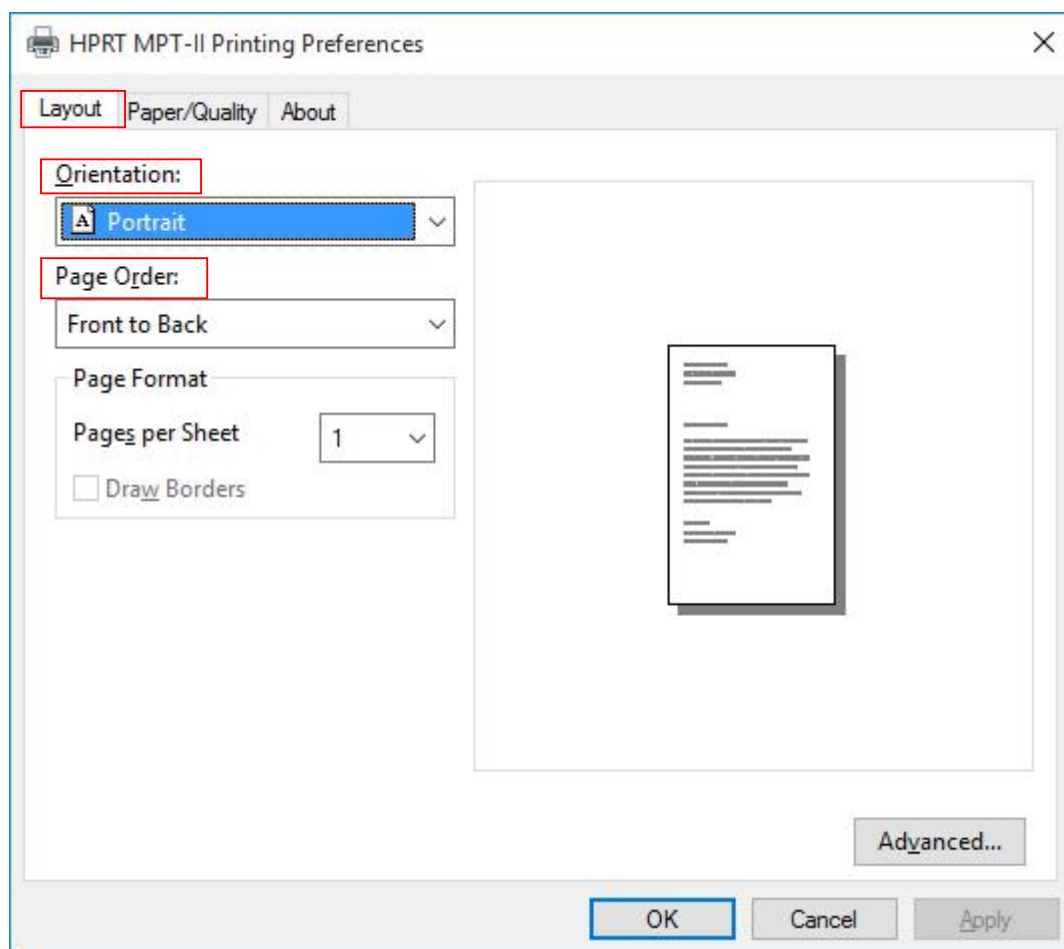
5.Detailed Windows Driver Setting

5.1 Printing Preferences

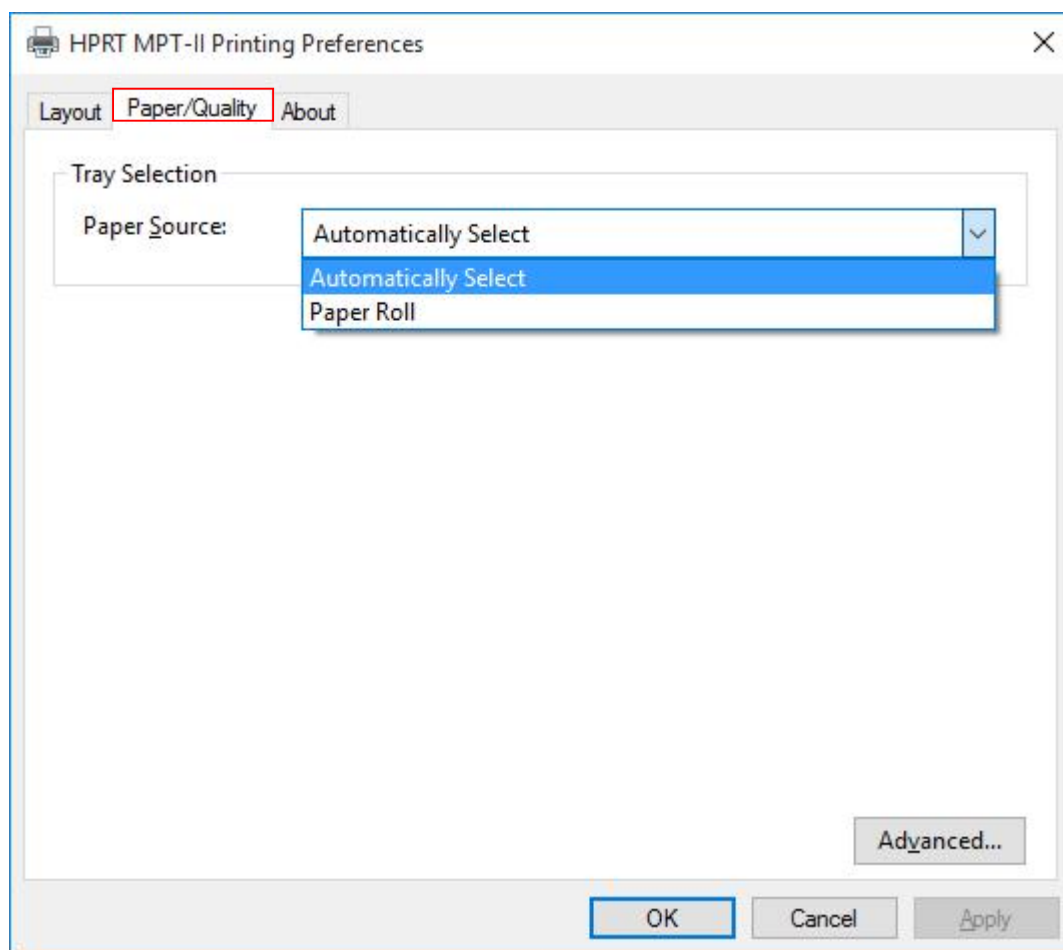
1.Click "Setting"→"Devices"→"Devices and Printers". Right click "HPRT MPT-II" and choose "Printing Preferences".



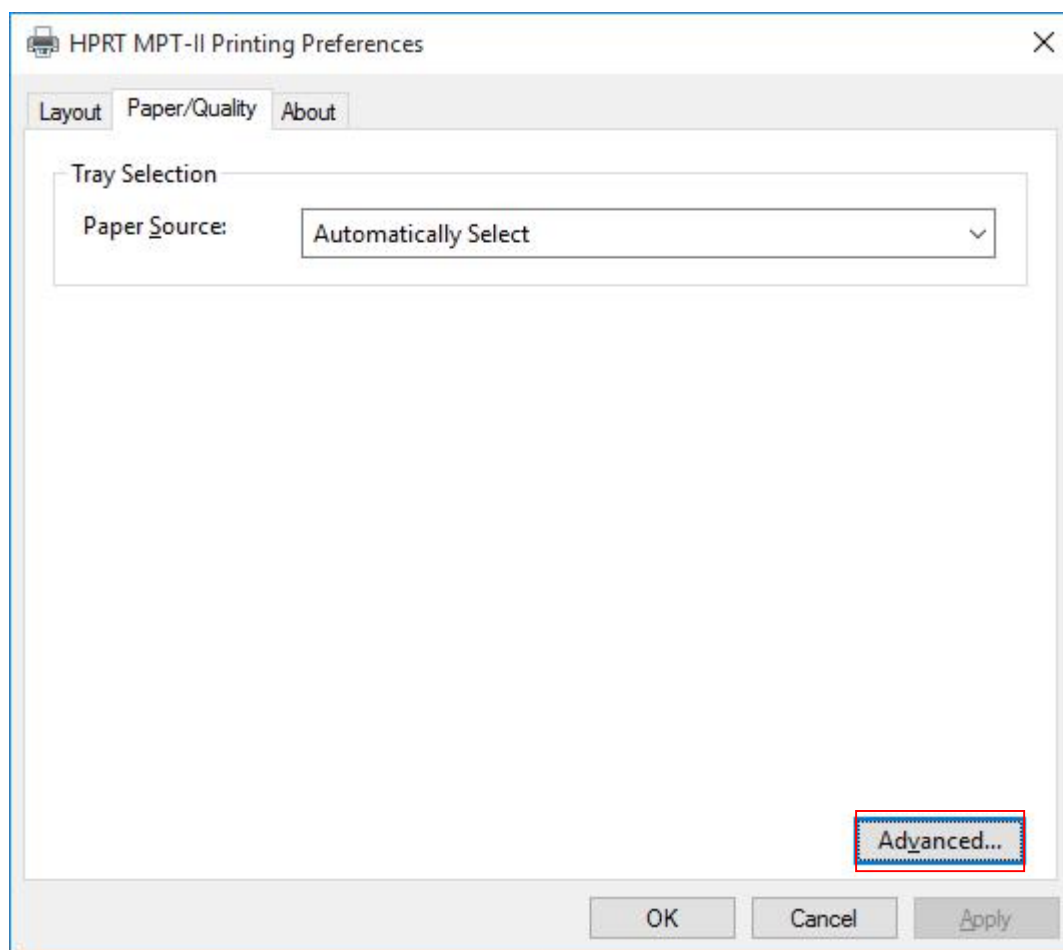
2. According to the different needs, choose "Orientation" \ "Page Order" in "Layout".



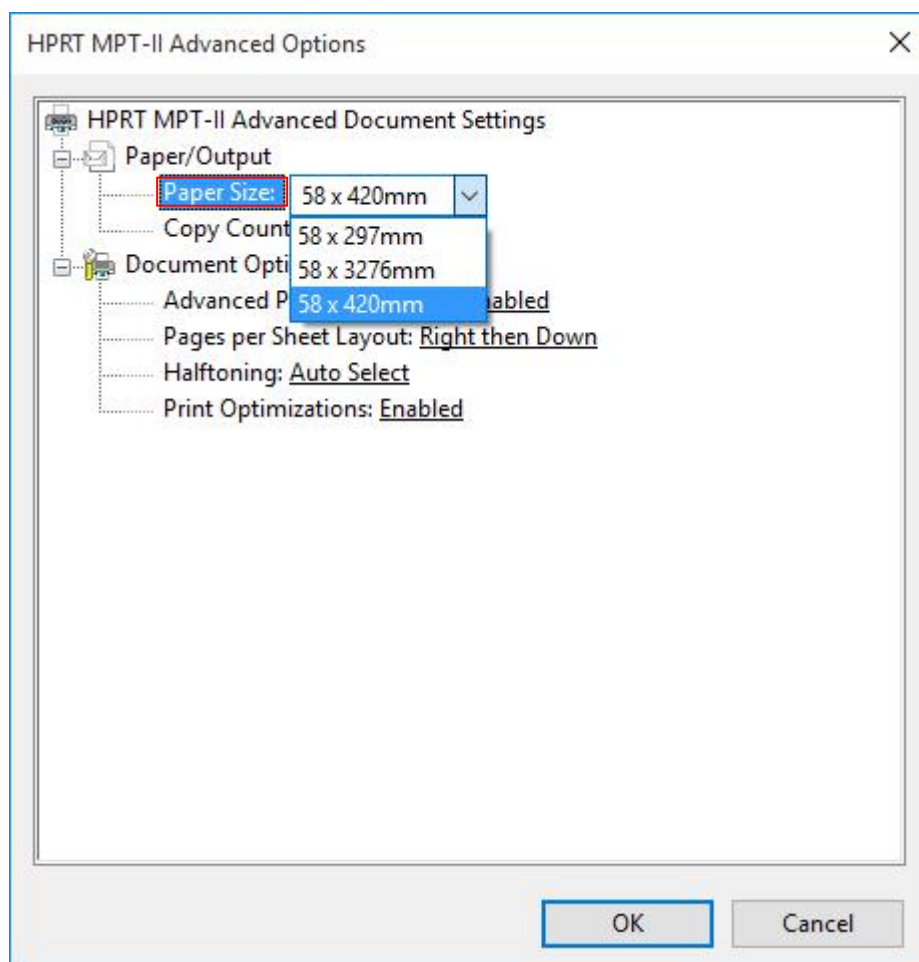
3. Click "Paper/Quality". Choose "Paper Source".



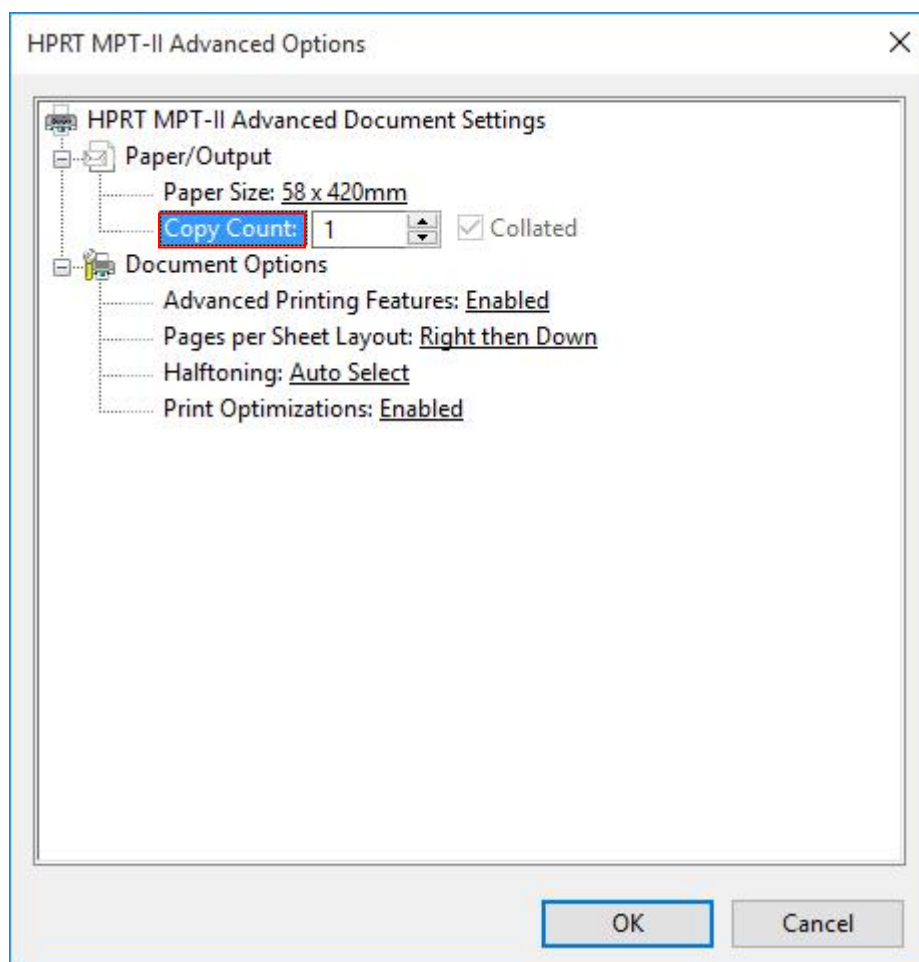
4. Click “Advanced” for more detailed setting.



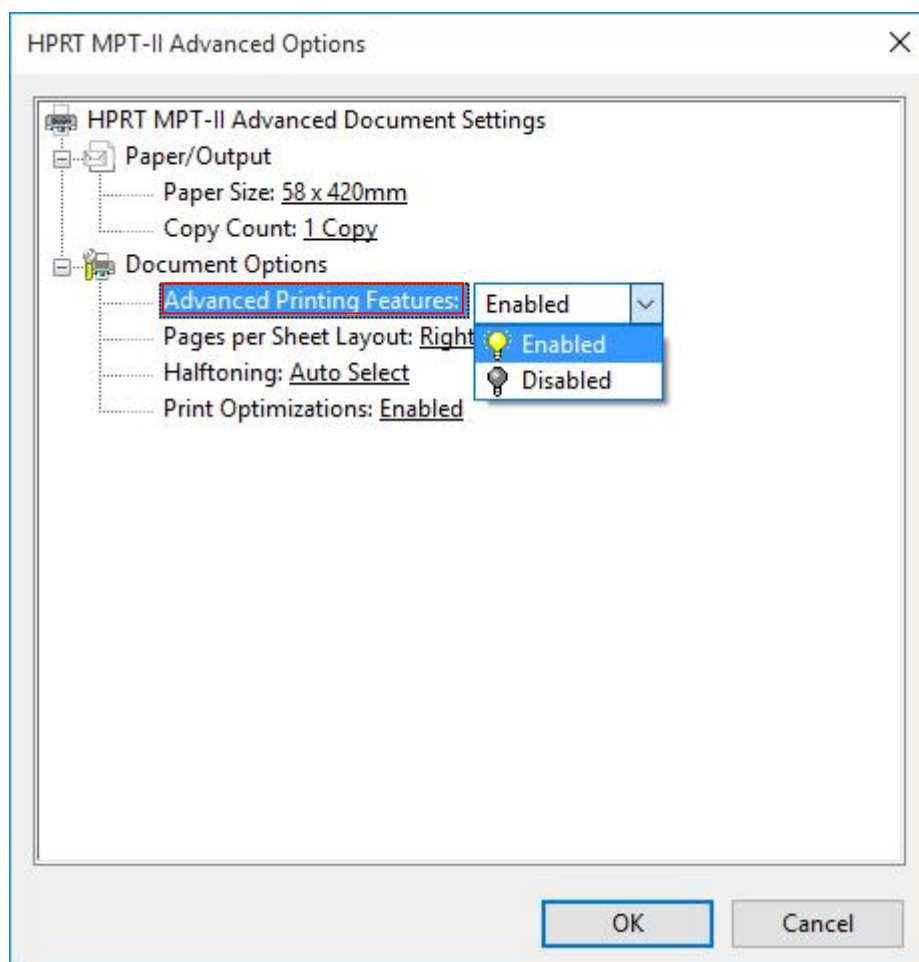
- Choose “Paper Size”



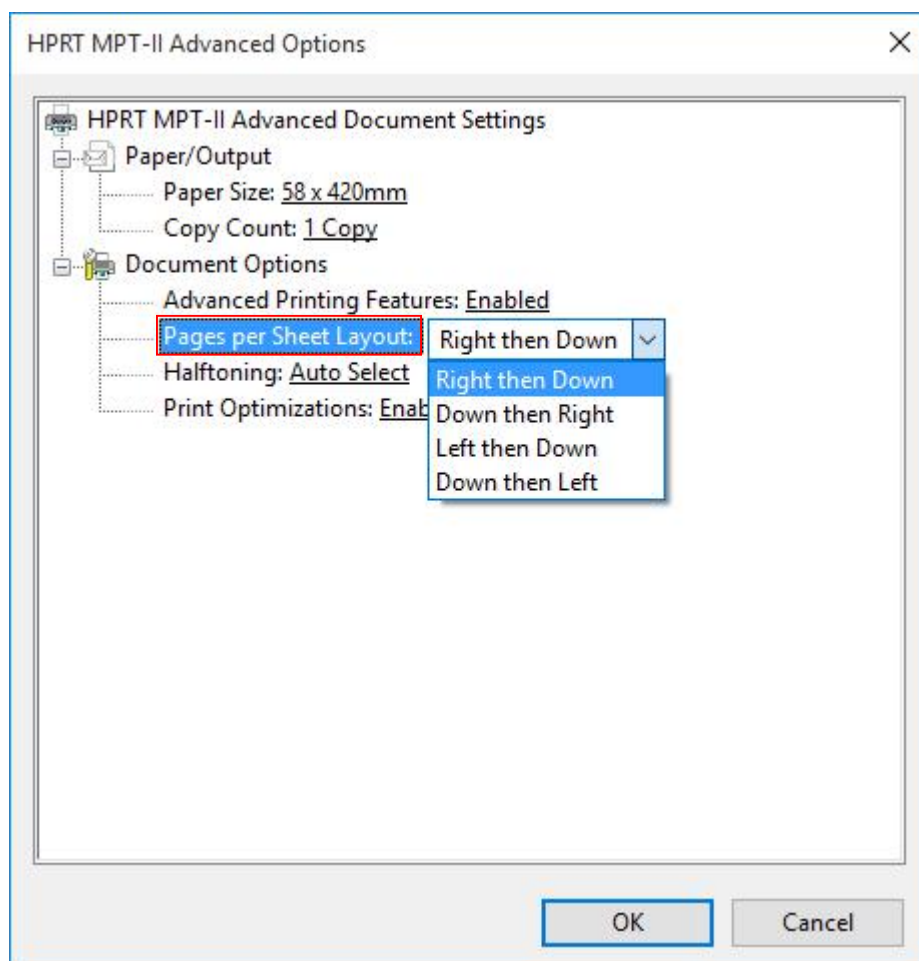
- Choose “Copy Count”



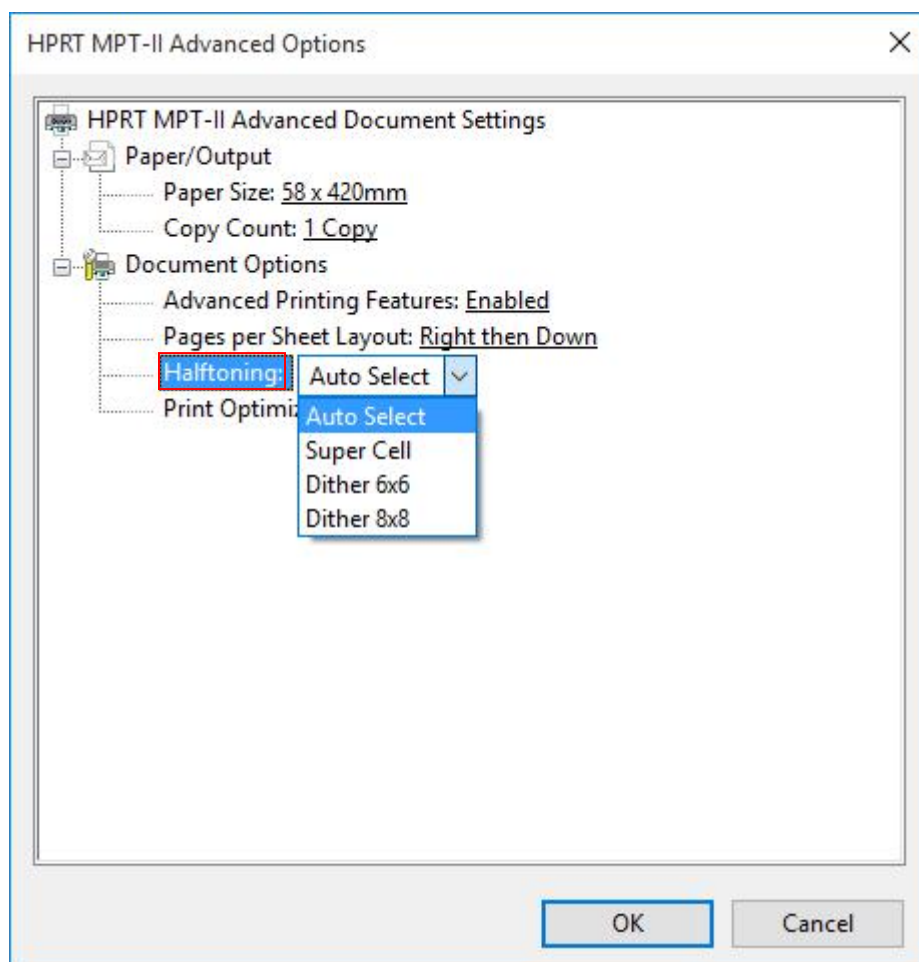
- Choose “Advanced Printing Features”



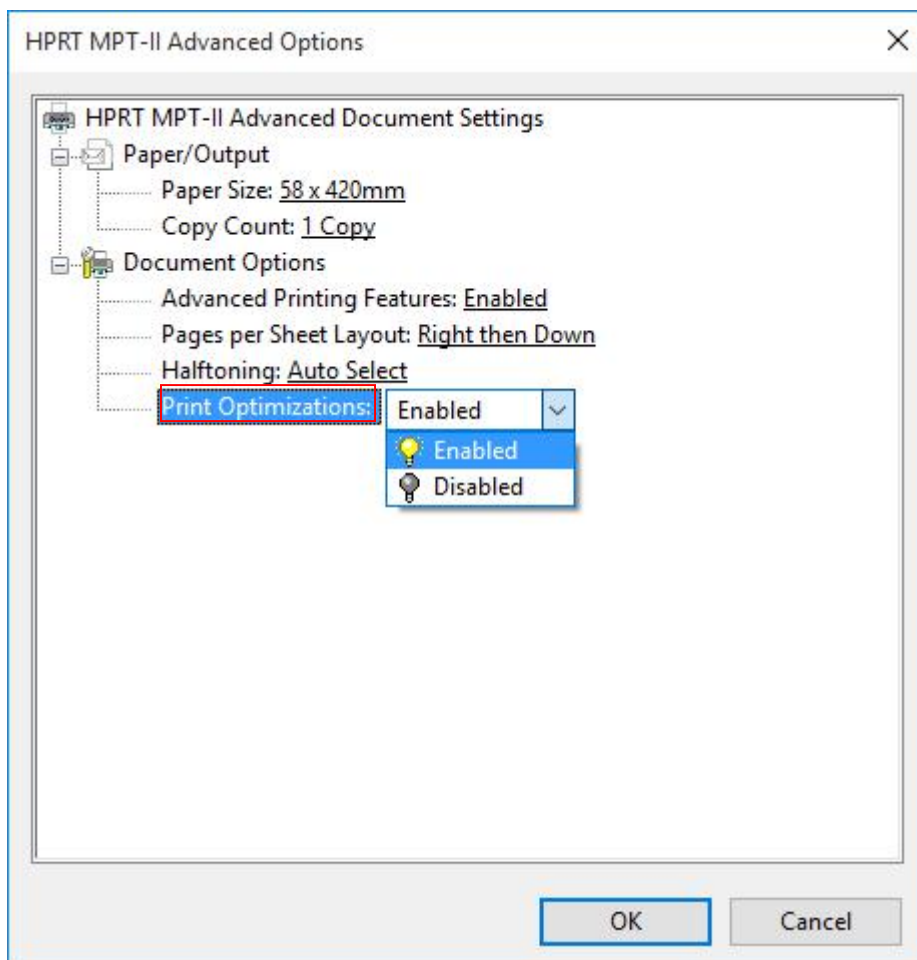
- Choose “Pages per Sheet Layout”



- Choose “Halftoning”



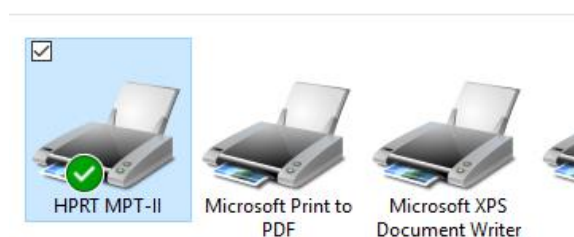
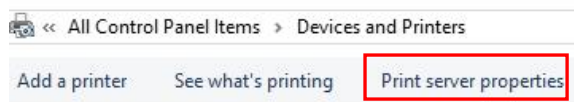
- Choose “Print Optimizations”



5. After all the setting, click “OK” to save it.

5.2 Add New Paper Size

1. Click "Setting" → "Devices" → "Devices and Printers" → "Print server properties".



2. Choose “Create a new form”, type the new form name, set up Paper size and Printer area margins, then, click “Save Form”.

Print Server Properties

Forms Ports Drivers Security Advanced

Forms on: DESKTOP-K30311L

10x11
10x14
11x17
12x11

Delete

Save Form

Form name: new

☒ Create a new form

Define a new form by editing the existing name and measurements. Then click Save Form.

Form description (measurements)

Units: ☒ Metric ☐ English

Paper size: Printer area margins:

Width: 5.60cm Left: 0.00cm Top: 0.00cm

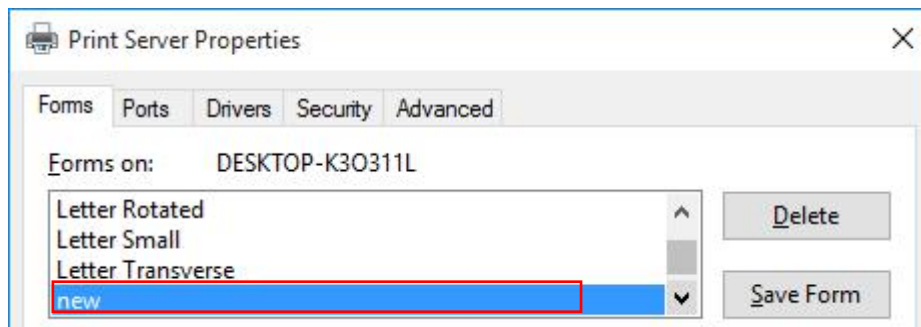
Height: 60.00cm Right: 0.00cm Bottom: 0.00cm

Change Form Settings

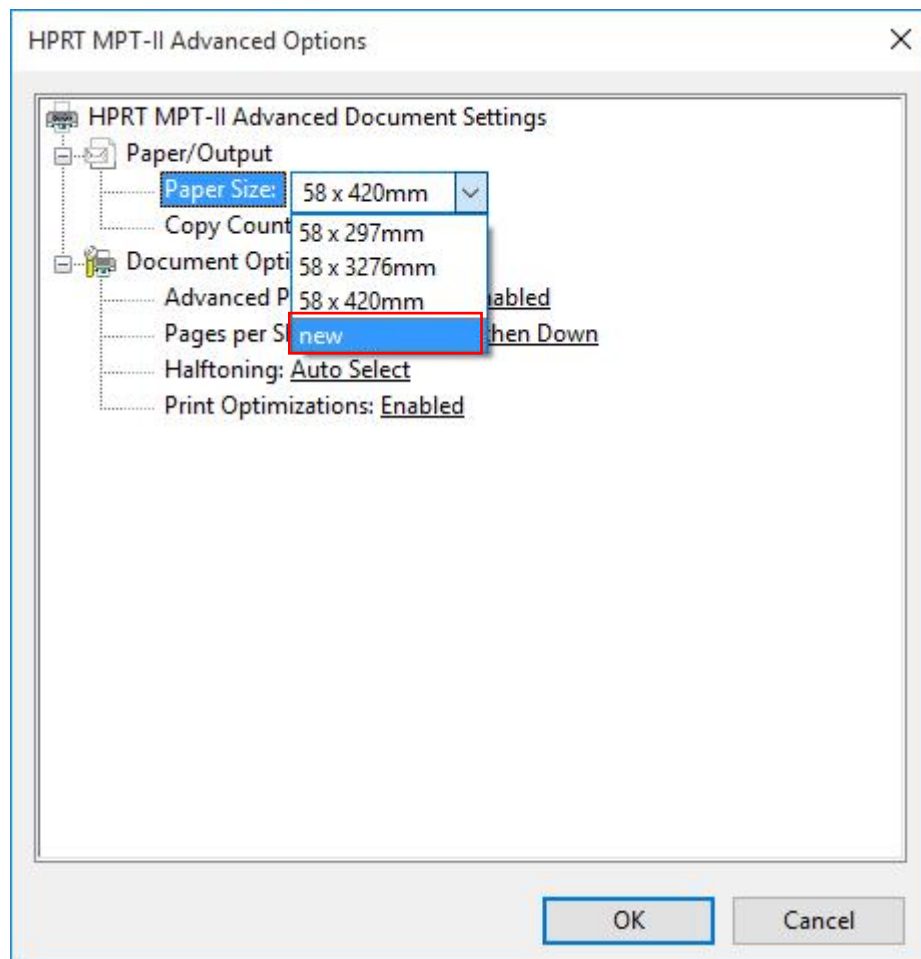
OK Cancel Apply

Note: HPRT MPT-II maximum print width is 58mm, minimum print width is 25.4mm, maximum print height is 4095mm, minimum print height is 25.4mm.

3. Check the new form from the form window above.



4. When the new form is added successfully, users can check the new paper size from "Printing Preferences".



6.Specification

Resolution:

HPRT MPT-II : 203×203dpi

Paper Size:

58mm*297mm

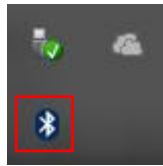
58mm*3276mm

58mm*420mm

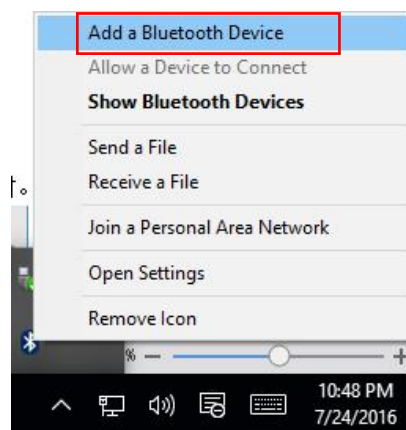
7. Bluetooth connection

1. Successfully install the driver.

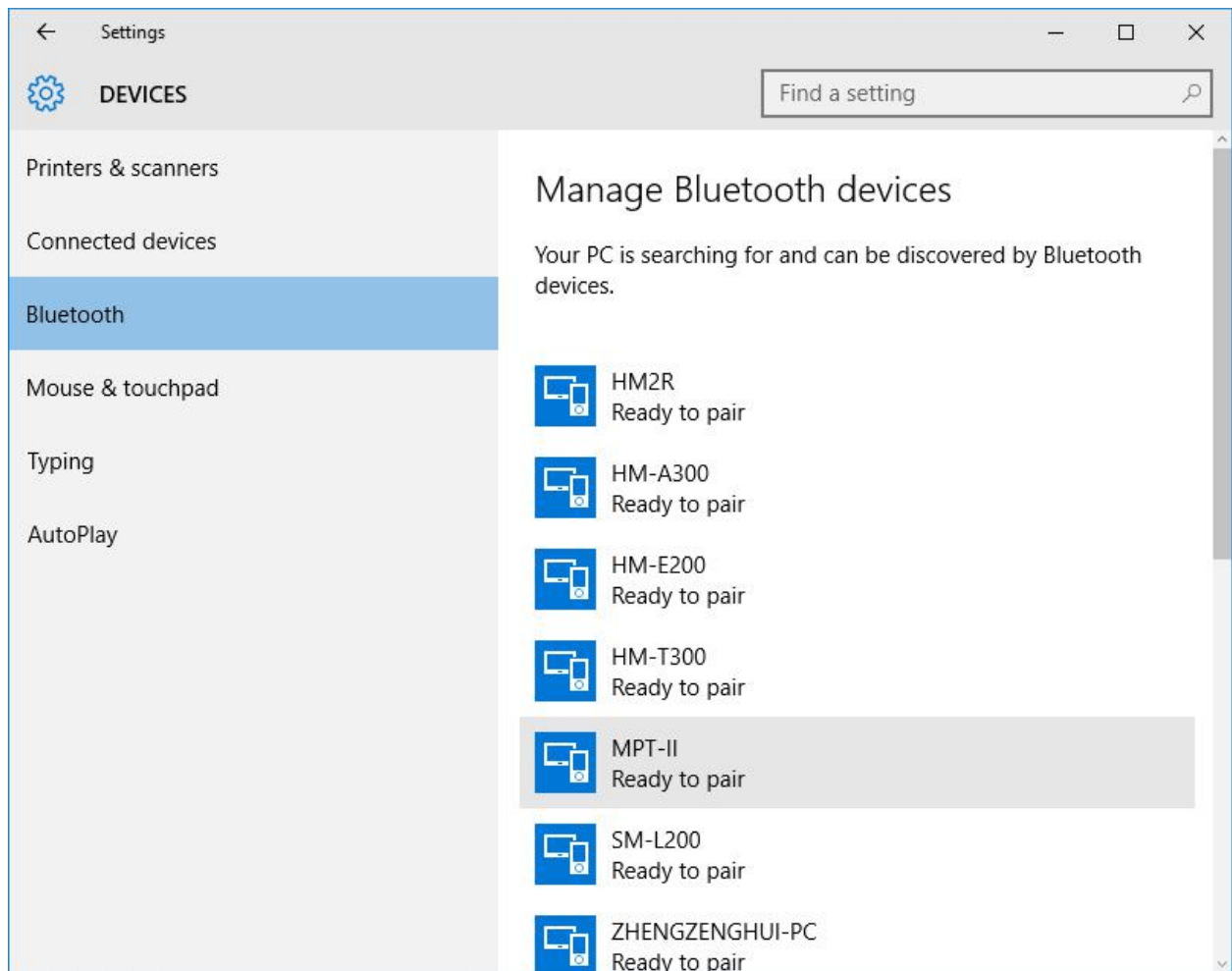
2. If your computer comes with a bluetooth module then directly to the next step; if no bluetooth module, insert the bluetooth stick on your computer, the bluetooth icon will appear on the computer.



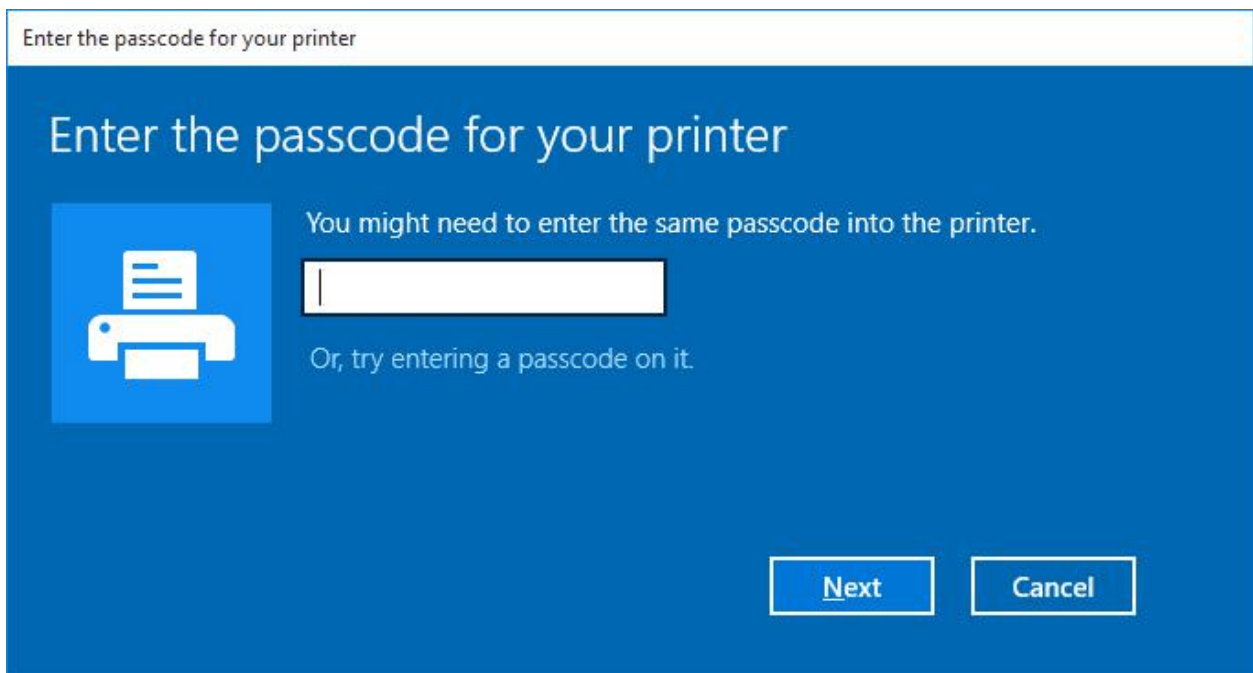
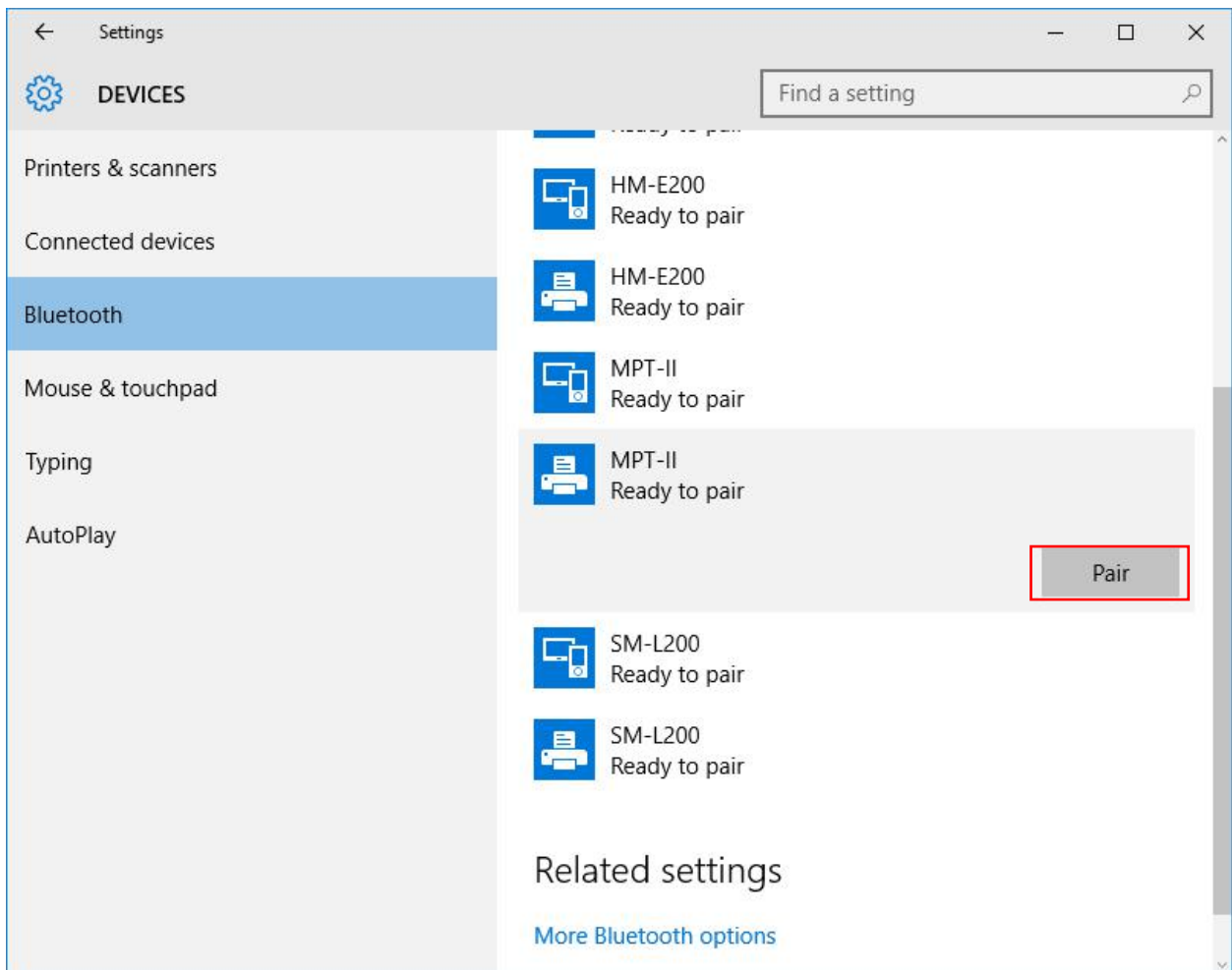
3. Right click the Bluetooth icon, and choose “Add a Bluetooth Device”.



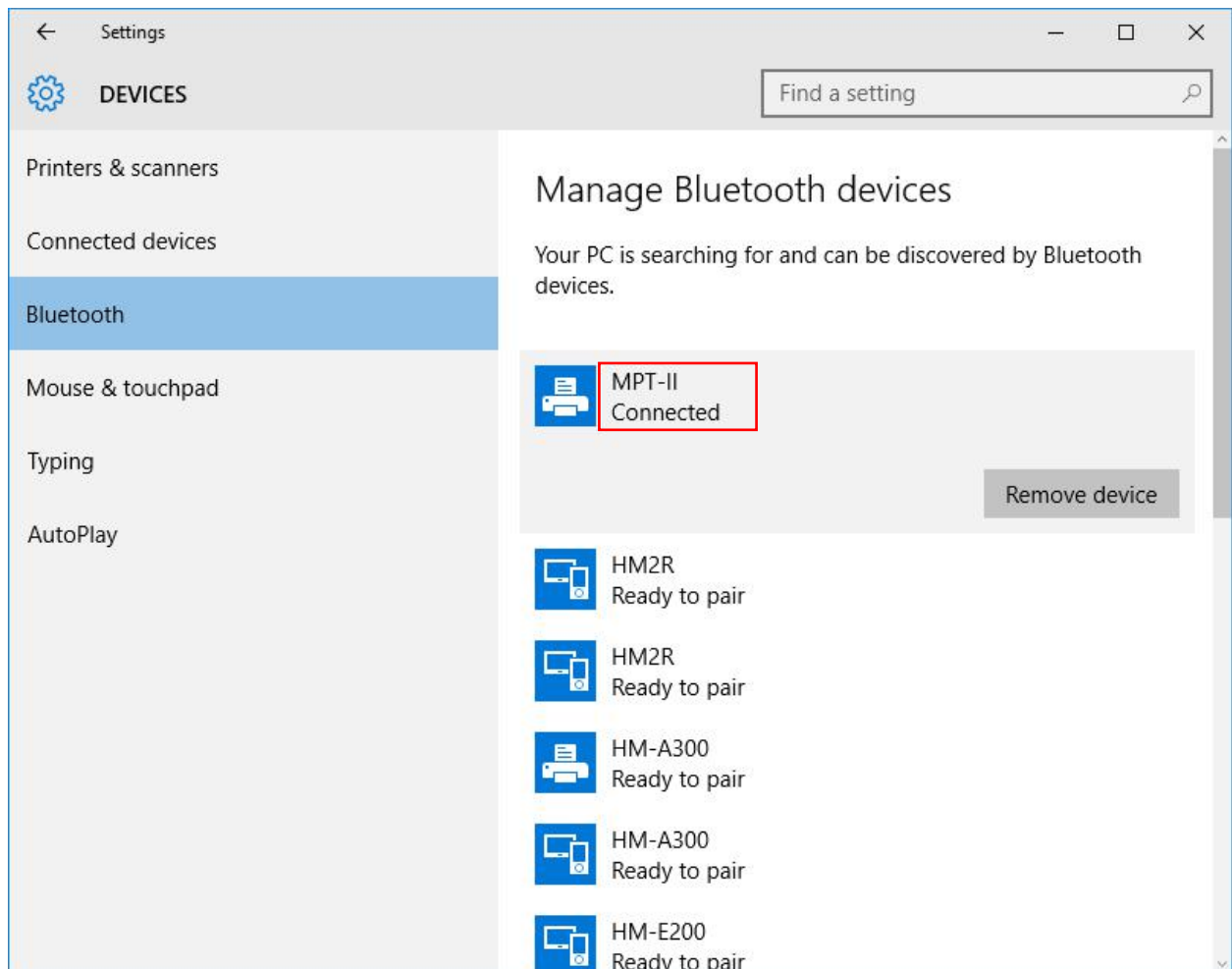
4. Select “Bluetooth”, wait until the show is ready and Bluetooth pairing.



5. Click “Pair”, enter the password for pairing.



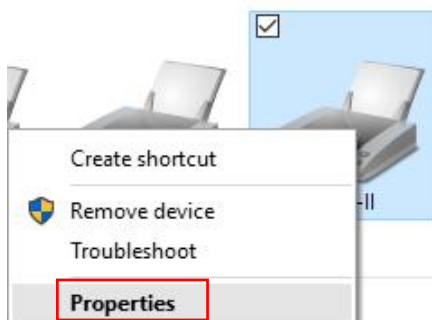
6. Pairing successful connection to display.



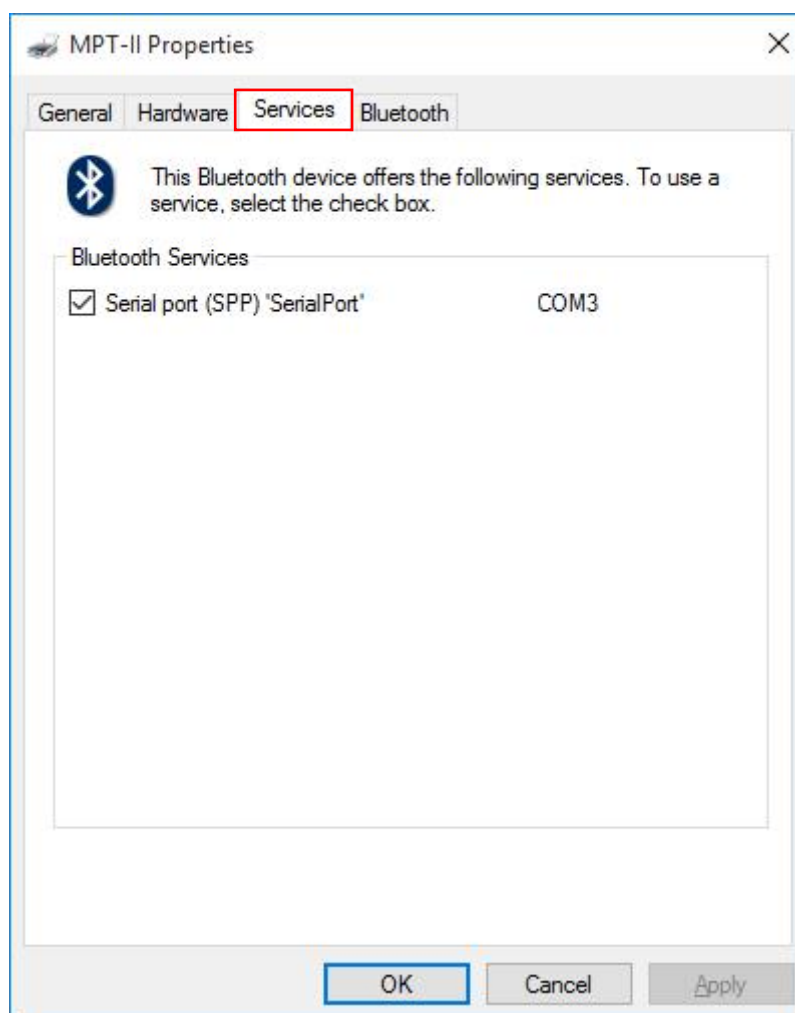
7. Into the “Devices and Printers”, you can see the corresponding Bluetooth icon.



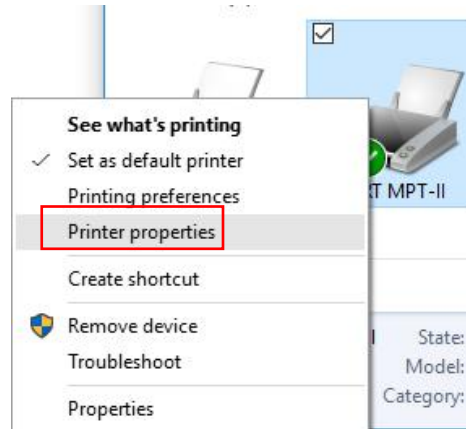
8. Right click the Bluetooth icon, and choose "Properties".



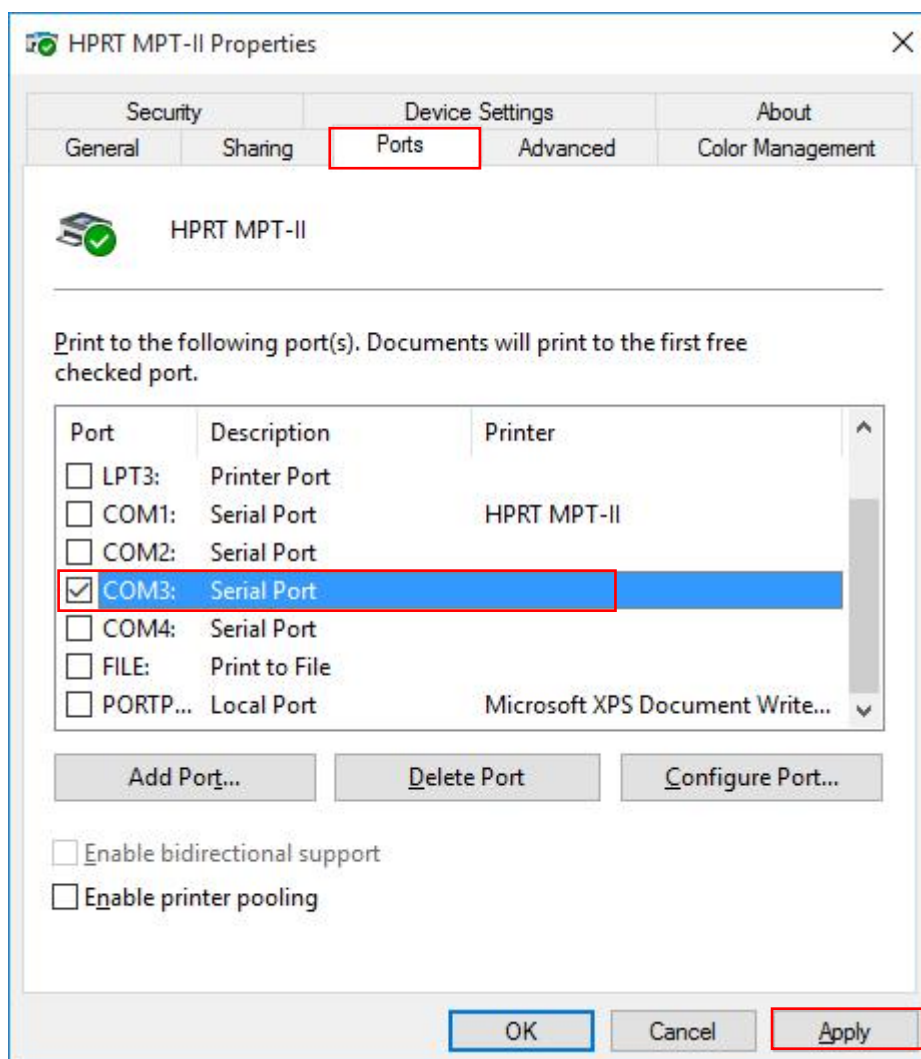
9. In the bluetooth properties, choose "services", that is connected to a Bluetooth port.



10. Into the “Devices and Printers”, you can see the corresponding printer icon, right click and choose “Printer properties”.



11. In the “Properties”, choose “port”, select (9) step that the port, Click “Apply”.



12. Print Driver test page to see if the driver test page can be printed normally; if fails, check whether Bluetooth is disconnected or the corresponding COM port is occupied.